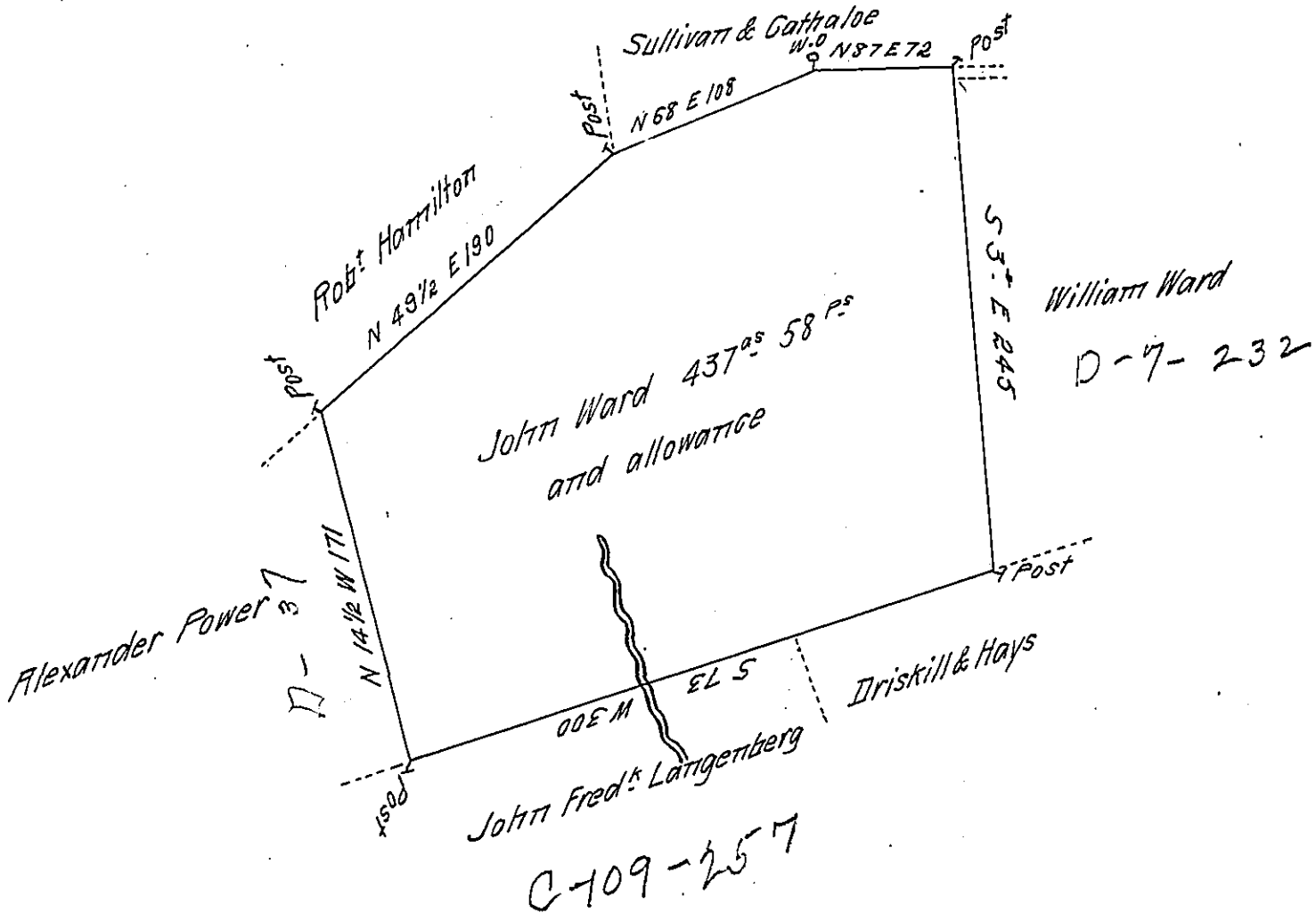


B-4-200



A Draught of a Tract of Land Situate in Rye Township Cumberland County containing four hundred and thirty seven Acres and 58 perches and allowance of 6^{as} P^s G^t for Roads &c Surveyed April 15th 1794 in pursuance of a Warrant granted to John Ward bearing date the 24th of Feb^y 1794.

To Daniel Brodhead Esq^r
 Surveyor General

P^r Sam^l Lyon D. S.

IN TESTIMONY that the above is a copy of the original remaining on file in the Department of Internal Affairs of Pennsylvania, made conformably to an Act of Assembly approved the 16th day of February, 1833, I have hereunto set my Hand and caused the Seal of said Department to be affixed at Harrisburg, this twenty first day of April 1911

Henry Howell
 Secretary of Internal Affairs.